



## PARTS & INSTALLATION INSTRUCTIONS E-58H ELECTRO-LIFT® UNITS

### PARTS LIST

| ITEM | E-58H | QTY | DESCRIPTION                             |
|------|-------|-----|-----------------------------------------|
| 1    | 15889 | 1   | <b>Pump &amp; Motor Assy. (12 volt)</b> |
| 2    | 15727 | 1   | • Motor - 12 Volt (2 Terminal)          |
| 3    | 15889 | 1   | • Pump Assy.                            |
| 4    | 15874 | 1   | •• Kit - Pump Relief Valve              |
| 5    | 15870 | 1   | •• Relief Valve Assy.                   |
| 6    | 15878 | 1   | •• Plug w/O-Ring                        |
| 7    | 08788 | 1   | • Hardware Bag - 15889                  |
| 8    | 15973 | 3   | •• Pump Stud                            |
| 9    | 20697 | 3   | •• Locknut 5/16 - 24                    |
| 10*  | 15875 | 1   | Seal Kit Relief Valve                   |
| 11   | 15877 | 1   | Pump Shaft Seal                         |
| 12   | 15204 | 1   | Cylinder Tank                           |
| 13*  | 15131 | 1   | O-Ring 3-1/2 I.D.                       |
| 14*  | 15163 | 1   | O-Ring 1-15/16 I.D.                     |
| 15*  | 15198 | 1   | O-Ring 1-1/8 I.D.                       |
| 16   | 15738 | 1   | <b>Cover &amp; Seal Assy.</b>           |
| 17*  | 05119 | 1   | • Wiper                                 |
| 18*  | 15131 | 1   | • O-Ring 3-1/2 I.D.                     |
| 19   | 15737 | 1   | • Sleeve                                |
|      | 08473 | 1   | <b>Pressure Relief Valve Kit</b>        |
| 20   | 21805 | 1   | • Reducer Bushing 1/4 x 1/8             |
| 21   | 21806 | 1   | • Pressure Relief Valve                 |
| 22   | 15205 | 1   | Cylinder                                |
| 23   | 15209 | 1   | Washer (Grooves Down)                   |
| 24   | 15761 | 1   | <b>Ram Assembly</b>                     |
| 25   | 15206 | 1   | • Ram                                   |
| 26   | 15158 | 1   | • Piston                                |
| 27   | 15219 | 1   | • Piston Follower                       |
| 28   | 15760 | 1   | • Spacer                                |
| 29*  | 15162 | 1   | • Packing Cup                           |
| 30*  | 15125 | 1   | • O-Ring 7/16 I.D.                      |
| 31   | 20316 | 1   | • Locknut 1/2-13                        |
| 32   | 15980 | 1   | <b>Base &amp; Strainer Assy.</b>        |
| 33   | 15326 | 1   | • Strainer                              |
| 34   | 15641 | 1   | • Filter Kit - 9/16"                    |
| 35   | 15619 | 1   | •• Filter                               |
| 36   | 21999 | 1   | •• Plug w/O-Ring - 9/16"                |
| 37   | 15203 | 3   | Stud                                    |
| 38   | 15621 | 1   | Baffle                                  |
| 39   | 21980 | 2   | Retainer Ring                           |
| 40   | 15574 | 1   | <b>Pump Check Valve Kit</b>             |
| 41*  | 15124 | 1   | • O-Ring 3/8 I.D.                       |
| 42   | 15354 | 1   | • Seat                                  |
| 43   | 15603 | 1   | • Ball, 9/32                            |
| 44   | 15604 | 1   | • Spring                                |
| 45*  | 15122 | 3   | O-Ring 1/4 I.D.                         |
| 46   | 21999 | 2   | <b>Drain Plug w/O-Ring - 9/16"</b>      |
| 47*  | 15127 | 1   | O-Ring 5/8 I.D.                         |
| 48*  | 21929 | 3   | Washer, Nylite 5/16                     |
| 49   | 20697 | 3   | Locknut 5/16 - 24                       |

| ITEM | E-58H | E-58H New | QTY | DESCRIPTION                       |
|------|-------|-----------|-----|-----------------------------------|
| 50   | 15967 | 15967     | 1   | • Valve Assy. (12V)               |
| 51   | ----- | -----     | 2   | • Coupler, Female Half (OPTIONAL) |
| 51   | 22445 | -----     | 1   | • Coupler, Female Half (OPTIONAL) |
| 52   | ----- | -----     | 2   | • Coupler, Male Half (OPTIONAL)   |
| 52   | 22442 | -----     | 1   | • Coupler, Male Half (OPTIONAL)   |
| 53   | 15925 | -----     | 1   | <b>"A" Solenoid Assembly</b>      |
| 54   | 15916 | 15118     | 1   | •• Coil (12V)                     |
| 55   | 15917 | 15146     | 1   | •• "A" Cartridge Valve            |
| 56   | 15928 | -----     | 1   | ••• Seal Kit, "A" Valve           |
| 57   | 15926 | -----     | 1   | <b>"B" Solenoid Assembly</b>      |
| 58   | 15916 | 15118     | 1   | •• Coil (12V)                     |
| 59   | 15918 | 15117     | 1   | •• "B" Cartridge Valve            |
| 60   | 15929 | -----     | 1   | ••• Seal Kit, "B" Valve           |
| 61   | 15959 | 15152     | 1   | Kit- "B" Check Valve              |
| 62   | 15987 | -----     | 1   | <b>"C" Solenoid Assembly</b>      |
| 63   | 15916 | 15118     | 1   | •• Coil (12V)                     |
| 64   | 15958 | 15111     | 1   | •• "C" Cartridge Valve            |
| 65   | 15930 | -----     | 1   | ••• Seal Kit "C" Cartridge        |
| 66   | 15950 | 18350     | 1   | Lower Adjustment Valve            |
| 67   | 15965 | 15148     | 1   | Dual PO Check Valve               |
| 68   | 15951 | -----     | 1   | Kit P.A. Block Filter             |
| 69   | 15936 | -----     | 1   | • Tank Filter                     |
| 70   | 15938 | -----     | 1   | • O-ring                          |
| 71   | 15937 | -----     | 1   | • M16 x 1 Filter Cap              |
| 72   | 15974 | 15179     | 1   | Crossover Valve                   |
| 73   | 21826 | 21826     | 4   | Soc. Head 5/16-18 x 1-1/2"        |

Parts indented are included in assembly under which they are indented.

\* Parts included in Master Seal Kit Part No.

15969 (E-58H)

Basic Seal Kit Part No. 15254

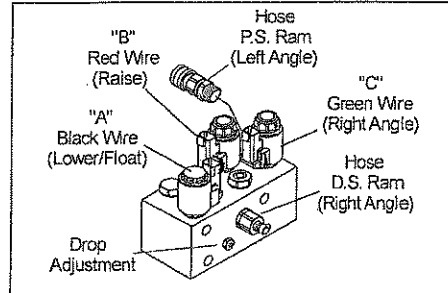
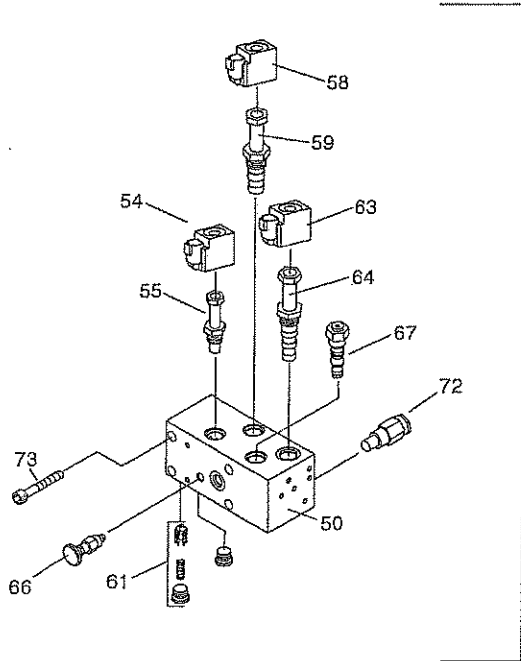
Pump Relief Valve @ 2000 ± 50 P.S.I. full flow. **Non Adjustable**

Crossover Relief Valve @ 3600 ± 400 P.S.I. @ 2-1/2 G.P.M. **Non Adjustable**

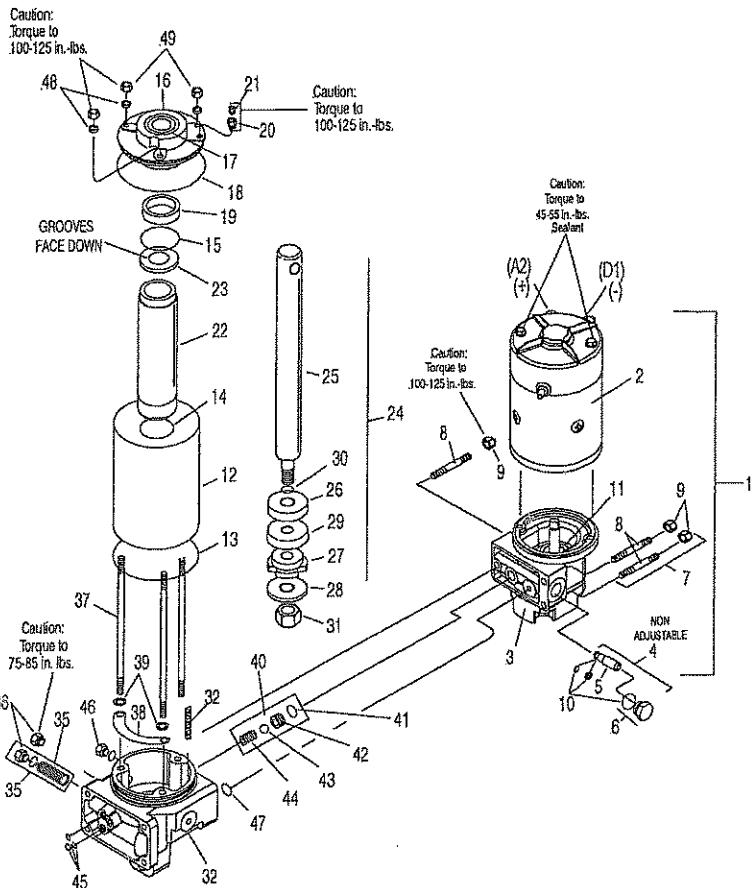
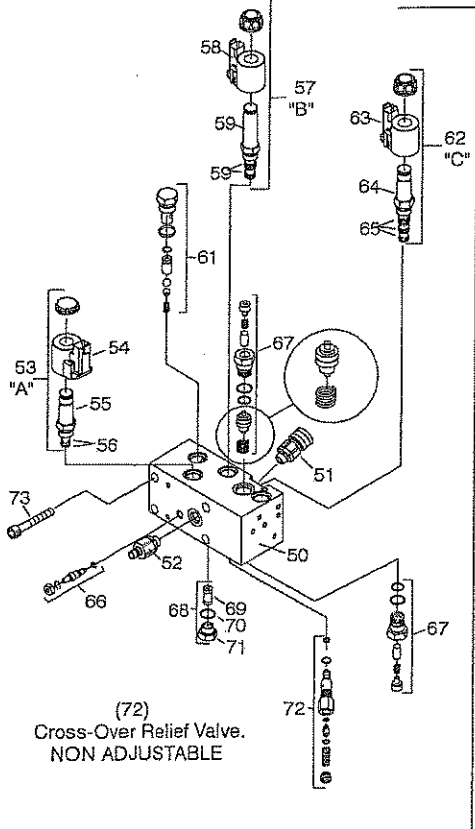


# EXPLODED VIEW

## E-58H New Block



## E-58H



## GENERAL INFORMATION

Before the Meyer Electro-Lift® unit is disassembled for repairs, make certain that all the maintenance procedures have been checked; refer to Owner's Manual. When the unit is to be overhauled, Master Seal Kit Part No. 15969 (E-58H) is required. This Kit contains all necessary Seals for rebuilding.

These instructions are intended as a guideline for overhaul of an E-58H Electro-Lift® unit.

When ordering parts, furnish Type of Unit, Part No., Name and Description.

More detailed information covering principles of Operation, Troubleshooting, Disassembly and Repair are found in Electro-Lift® Service Manual 1-822. This is available for a nominal fee from your Meyer Distributor.

## DISASSEMBLY AND INSPECTION OF UNIT

### NOTE: DO NOT REUSE OLD O-RINGS.

Drain fluid from the unit by removing Pressure Relief Valve (21) and Drain Plug (46). Clamp Sump Base (32) firmly into vise.

1. To disassemble COVER ASSEMBLY, TANK, RAM & CYLINDER PARTS, remove three Locknuts (49).
2. To disassemble MOTOR from PUMP, loosen Motor mounting bolts, but DO NOT REMOVE bolts from motor housing.  
  
**Note:** Motor end plate to be held in place. Temporarily install two 1/4-20 nuts on the motor mounting bolts to keep motor intact. Remove nuts when reinstalling Motor to pump.
3. To disassemble Pump from Base, remove three Locknuts (9).
4. To disassemble VALVE BLOCK from BASE, remove Soc. Hd. Screws (73).

### SUBASSEMBLIES - INSPECTION

1. COVER ASSEMBLY, TANK, RAM & CYLINDER PARTS:
  - a) Check Cover (16), and Base (32) castings for cracks and damage.
  - b) Replace Wiper Seal (17) pressed in Cover (16).
  - c) Inspect Sleeve (19), Piston (26), the Piston Follower (27), Spacer (28) for excessive wear. Replace Packing Cup (29). Inspect Cylinder (22) for scoring and pitting in bore.
  - d) Inspect Ram (25) for nicks and rust.

2. MOTOR - Two Terminal (2)

**Note:** Complete Motor Assemblies are only available from Meyer Products. The only service parts available are a Brush Kit 15854.

3. PUMP (3)

**DO NOT at any time disassemble this Pump. This will void the warranty.**

- a) A damaged pump drive Shaft Seal (11) may be removed by careful extraction with a pointed tool. Dip new Seal in oil and with lip down, press into Pump Housing flush to 1/32 inch below face of boss.

4. BASE (32)

- a) Remove (36) and clean the Filter Screen (35) using kerosene and blow out with air. Replace O-rings (35) from Seal Kit No. 15978.

5. VALVE BLOCK (48)

- a) Clean "A" & "B" Cartridge and inspect for damage. Replace O-rings from Seal Kit No. 15928 or 15929 (E-58H "B") contained in Master Seal Kit No. 15969.
- b) Remove and clean "C" Solenoid and inspect for damage. Replace O-rings and nylon back-up rings from Seal Kit No. 15930 (E-58H) in Seal Kit No. 15969. Be certain O-rings and spacers are oriented properly.
- c) Test all Coils for electrical continuity. Nominal Coil resistance is 8.3 ohms.
- d) Remove Pilot Check Valves and Piston Assemblies and inspect the Piston for scratches. Replace O-rings from Master Seal Kit No. 15969.
- e) Remove crossover relief valve (72) and inspect for damage. Replace O-rings from Seal Kit No. 15969.
- f) With parts removed from Valve Block, clean and blow out with air to remove any foreign particles in Block.

6. UNIT REASSEMBLY

- a) Before reassembling, make certain all components and sub-assemblies are clean and free from all dirt and other foreign material.  
  
lubricate all orings with M-1 oil during assembly.  
  
Coat all bolt threads with a anti-sieze lubricant prior to reassembly.
- b) Motor mounting bolts must be sealed with Permatex or an all weather type sealant.
- c) **USE NEW SEALS AND M-1 FLUID WHEN REASSEMBLING THE UNIT.**
- d) Proper fluid level is 1-1/2" below filler hole. It must be checked with Lift Ram fully retracted.

**IMPORTANT: HYDRAULIC UNIT IS TO BE STORED IN THE OFF SEASON WITH THE LIFT RAM IN THE "UP" POSITION.**

#### NOTES:

1. \* Parts included in Master Seal Kit Part No. 15969 (E-58H)
2. Basic Seal Kit Part No. 15254
3. Pump Relief Valve @ 2000 ± 50 P.S.I. full flow. **Non Adjustable**
4. Crossover Relief Valve @ 3800 ± 400 P.S.I. @ 2-1/2 G.P.M. flow. **Non Adjustable**

Meyer Products LLC reserves the right, under its continuing product improvement program, to change construction or design details, specifications and prices without notice or without incurring any obligation.



**PARTS & INSTALLATION INSTRUCTIONS**  
**E-58H ELECTRO- LIFT®**  
with **ELECTRO-TOUCH** and **1-1/2" x 10" P.A. Rams**

**Parts List**

| Item | 12 Volt Part No. | 24 Volt Part No. | Qty. | Description                                    |
|------|------------------|------------------|------|------------------------------------------------|
|      | 15988            | 15602            | 1    | Lift and P.A. Ass'y. (Complete)                |
| 1    | 15995            | 15613            | 1    | • Lift Ass'y. (Unit only)                      |
| 2    | 15630            | 15630            | 1    | • E-58H Lift Unit Cover                        |
| 3    | 15631            | 15631            | 1    | • Cover Strap                                  |
| 4    | 15370            | 15446            | 1    | • Starter Solenoid - 12 volt                   |
|      | 07620            | 07620            | 2    | • Ram L.H. & R.H. with Hose & Fittings         |
| 5    | 07968            | 07968            | 1    | •• Ram (1-1/2" x 10")                          |
| 6    | 22461            | 22461            | 1    | •• Hose Ass'y. SAE 1/4 x 38" Lg. M-6 Face Seal |
| 7    | 22460            | 22460            | 1    | •• SAE 6 x 90 Degree Elbow                     |
| 8    | 22691            | 22691            | 1    | • Universal Truck Side Harness                 |
| 9    | 22692            | 22692            | 1    | • Plow Side Harness                            |
| 10   | 05024            | 05024            | 1    | • Power Cable - 36"                            |
| 11   | 08473            | 08473            | 1    | • Relief Valve Kit - Reservoir                 |
|      | 15787            | 15787            | 1    | • Hardware Bag                                 |
|      | 07273            | 07273            | 1    | •• Tap Connector                               |
| 12   | 21398            | 21398            | 2    | •• S. Tapping Screw 1/4 - 14 x 3/4"            |
| 13   | 21832            | 21832            | 1    | •• Bushing - Split                             |
|      | 21953            | 21953            | 1    | •• Decal - Danger (Mount on Dashboard)         |
| 14   | 22690X           | 22690X           | 1    | • Pistol Grip Controller                       |
|      | 08364            | 08364            | 1    | • Hardware Bag (P.A. Rams)                     |
| 15   | 20146            | 20146            | 2    | •• Bolt H 5/8 - 11 x 3 1/4" Gr. 5              |
| 15   | 20150            | 20150            | 2    | •• Bolt H 5/8 - 11 x 4 1/2" Gr. 5              |
| 16   | 20309            | 20309            | 4    | •• Locknut 5/8 - 11                            |
|      | 08202            | 08202            | 1    | • Plug Bracket Kit                             |
| 17   | 19607            | 19607            | 1    | •• Plug Bracket                                |
| 18   | 19609            | 19609            | 1    | •• Plate                                       |
| 19   | 20027            | 20027            | 2    | •• Bolt H 5/16-18 x 1 Gr. 2                    |
| 20   | 22658            | 22658            | 2    | •• Bolt H 5/16-18 x 3 Gr. 2                    |
| 21   | 20525            | 20525            | 4    | •• Finish Nut 5/16-18                          |
| 22   | 20326            | 20326            | 4    | •• Lockwasher 5/16                             |
| *    | 08206            | 08206            | 1    | Complete Coupler Kit *Optional                 |
| 23   | 22442            | 22442            | 1    | • Male P.A. Block Coupler                      |
| 24   | 22443            | 22443            | 1    | • Female Hose Coupler                          |
| 25   | 22444            | 22444            | 1    | • Male Hose Coupler                            |
| 26   | 22445            | 22445            | 1    | • Female P.A. Block Coupler                    |

Parts indented are included in the carton, bag or assembly under which they are indented.

Meyer Products LLC reserves the right, under its continuing product improvement program, to change construction or design details, specifications and prices without notice or without incurring any obligation.



## GENERAL INFORMATION:

**CAUTION:** Always disconnect battery prior to installation.

Check contents against the parts list to determine all are correct and included. When ordering parts, furnish Part No., Name and Description, Type of Hydraulic Unit and Moldboard Size.

SAFETY PRECAUTIONS should be used when **Electro-Lift®** is in OPERATION and plow is in a RAISED position. LOWER plow to ground when vehicle is PARKED.

OVERHAUL and SERVICE INFORMATION is covered on separate instructions.

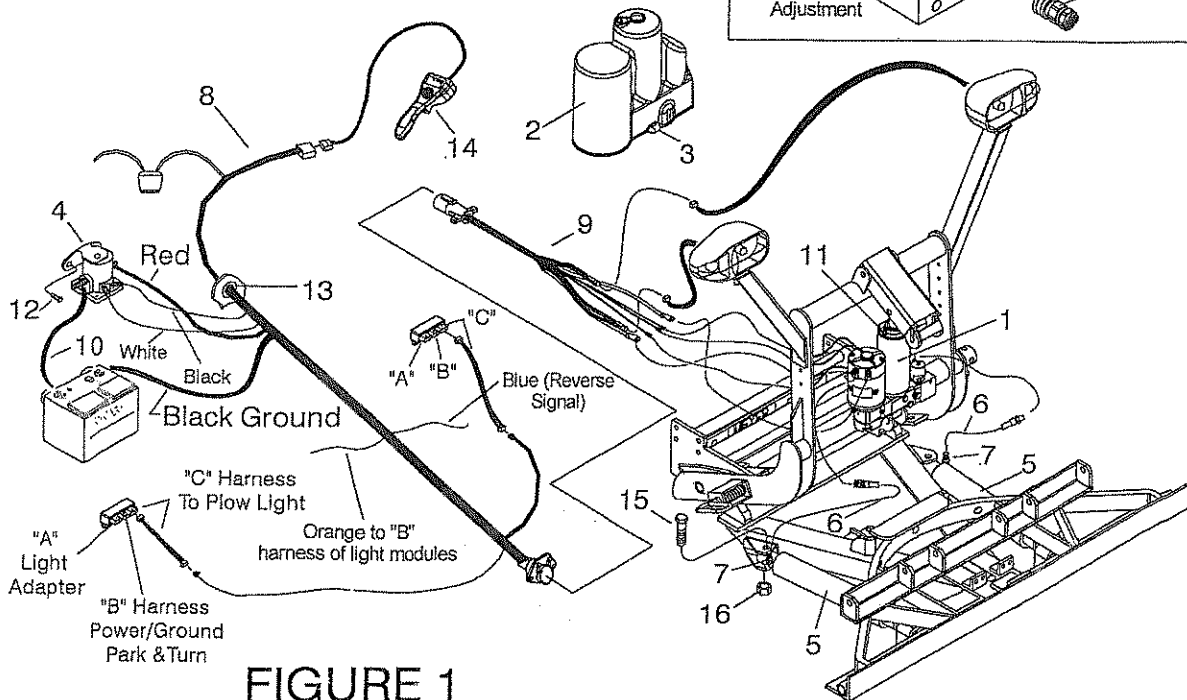
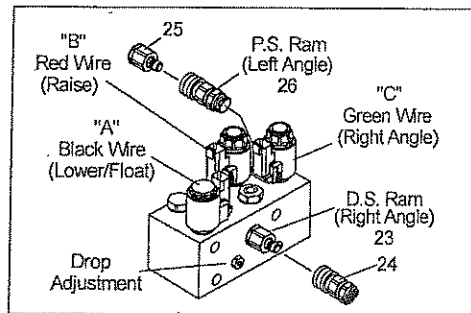
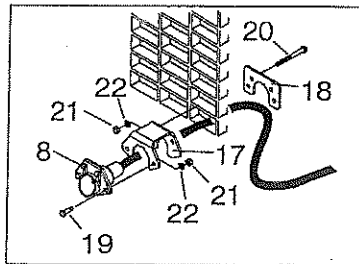
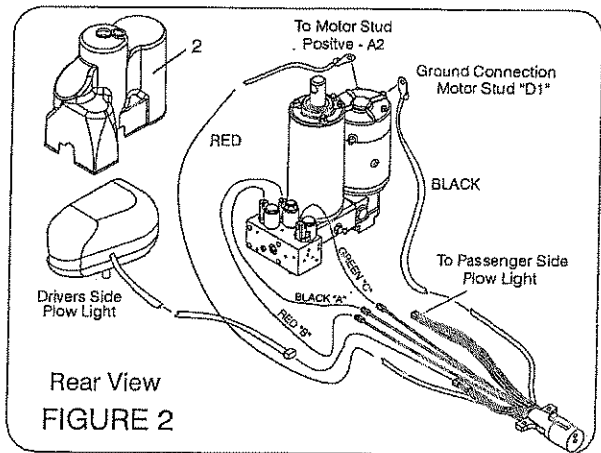
For **Electro-Lift®** Unit maintenance, refer to "Owner's Manual."

### NOTES:

1. Connect ground cable to negative side of battery for a solid connection to ground.
2. Caution: Route all cables away from moving engine parts, Manifolds, and sharp sheet metal.
3. For weather protection, tape all electrical connections at front of vehicle.
4. The vehicle must be equipped with a "Heavy Duty Battery" (70 Amp. Hr. Min.) 550 C.C.A. and "Alternator" (60 amp. Min.) to obtain maximum performance.
5. Follow these instructions explicitly. Warranty does not apply to a Meyer product which has been negligently or improperly assembled or installed.

## INSTALLATION INSTRUCTIONS

- Remove shipping plug from filler hole and install Relief Valve Kit (11). Tighten to 100-125 in. lbs.
- Attach Plow Side Harness (9) power cables to the Hydraulic Lift Unit (1). Attach the red (+) cable to the motor stud marked (A2). Attach the black (-) cable to the motor stud marked (D1). Connect the red, black and green wires from Plow Side Harness (9) and connect to solenoids on the Power Angling Block. See Figure 2.



## INSTALLATION INSTRUCTIONS CONT.

- C. Install E-58H Lift Assembly (1) to Lift Frame (using bolts supplied in the mounting carton), with the Electric Motor toward the right hand side (Passenger side); attach the lift ram to the Lift Arm. When installing on E-Z Mount Classic, reference SB 208.

### WARNING:

Lift arm extends beyond bumper of vehicle. To minimize damage from a front-end collision, lift arm should be removed from vehicle when snow plow is not in use.

- D. Install Universal Truck Side Harness (8) through the vehicle grill.
- H. Use Bushing (13) where Harness (8) is routed through firewall and radiator support panel. Requires 7/8" diameter hole. Be certain to route all wiring around hot or moving engine parts, and any sharp sheet metal. Protection must be provided to guard against wire damage at these points. All excess or loose wire must be neatly secured using wire ties. Fused lead from Wiring Harness (8) must be attached to terminal in fuse panel that is activated only when the ignition key is "on."
- I. Install Starter Solenoid (4) to metal surface in engine compartment using Screws (12). (Solenoid must be grounded to operate). Attach Red Power Cable (8) to a large terminal on Starter Solenoid (2). Attach Black Ground Cable (8) to negative (-) terminal of battery. Attach 36" Power Cable (10) to positive (+) terminal of battery and remaining large terminal on Starter Solenoid (2). Attach small white wire from harness (8) to small terminal marked (S) and small black wire from harness to small terminal marked (I)(Ground) on Starter Solenoid (8).
- M. Attach orange wire from harness (8) to the orange wires from each light module. This will eliminate the need for an additional switch in the cab to operate the snow plow lights. When the Pistol Grip Controller (14) is turned on the plow lights will be activated and when the controller (8) is turned off the plow lights will be deactivated.
- N. Attach Blue wire to a vehicle reverse signal (back up light). The blue wire is sensing when the vehicle is in reverse in order to operate HFP (Hands Free Plowing).

**Note:** All electrical connections should have both ends coated with a dielectric grease prior to final installation. This will ensure a good connection and help in preventing corrosion.

### POWER ANGLING CYLINDERS:

Attach Meyer Power Angling Cylinders (5) to Sector and A-Frame using bolts (15) and locknuts (16).

**Note:** 5/8-11 x 4-1/2" Bolts (15) must be used to connect the angle cylinder to the LP & DP Pivot Bar.

Make certain Ram (5) on Driver's side connects to the Drivers side port on the P.A. Block (SEE FIGURE 1).

**Optional Couplers Note:** When installing plow system to a E-Z Mount Classic or Custom Mountings optional coupler kit 08206 must be purchased separately. These couplers will install between the P.A. Block and the hoses. When the Moldboard Assembly is removed from the vehicle, to prevent contamination to the Couplers and Hydraulic system, the L.H. and R.H. Power Angling Hoses must be reattached by plugging the couplers together.

Power Angling Cylinders furnished with the Electro-Lift® have been factory filled with the proper amount of fluid. If for any reason it is necessary to add fluid to Reservoir or to bleed the Power Angling Cylinders, proceed as follows:

- Remove Relief Valve (11) from Reservoir to add fluid during charging and bleeding.
- Temporarily loosen both hose connections at the R.H., L.H. Power Angling Cylinders. Base end of Cylinder must be higher than Rod end to enable trapped air to escape.
- Angle the Plow in both directions until fluid leaks out at both points in a steady flow.
- Retighten the hose connections.

### NOTE:

Proper fluid level is 1-1/2" below filler hole. It must be checked with the lift arm fully retracted (down).

For snow plow light installation see separate instructions.

Reference Form 1-757 see Paragraph 7

Route Cables "C" (Yellow) from module to Male Plug (8). Connect both "C" Harness female ends to the male corresponding ends of the Male Plug (8). As per Figure 1.

Connect both male ends from the snow plow light to the female ends on the Female Socket (9). As per Figure 2.

Check snow plow light blinkers to make sure the wires have not been reversed.

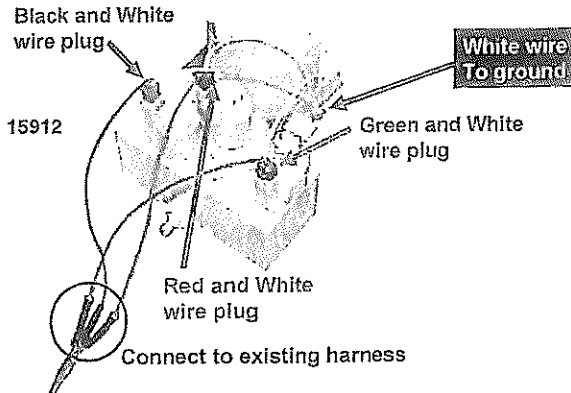


## PARTS & INSTALLATION INSTRUCTIONS

### 15995 E-58H Unit Only Hydraulic Carton

#### PARTS LIST

| Part No. | QTY | Description                              |
|----------|-----|------------------------------------------|
| 15995    | 1   | E-58H Hydraulic Unit                     |
| 15630    | 1   | • E-58H Cover                            |
| 15631    | 1   | • Cover Strap                            |
| 08128    | 1   | • Adapter Kit                            |
| 15912    | 1   | •• Connector Adapter                     |
| 22652    | 2   | •• SAE 6 x 1/4" NPT Adapter              |
| 22461    | 2   | •• 1/4 x 38" Hose Assy SAE 6 x Face Seal |
| 08206    | 1   | •• Coupler Kit                           |
| 22442    | 1   | ••• SAE 6 Male P.A. Block Coupler        |
| 22443    | 1   | ••• SAE 6 Female Coupler                 |
| 22444    | 1   | ••• SAE 6 Nipple Female Coupler          |
| 22445    | 1   | ••• SAE 6 Female P.A. Block Coupler      |



**Note: Do not use couplers (22443 and 22444) on units installed on E-Z Mount Plus, MDII or Drive Pro Plow Systems. Use 1/4 x 33" Hose Assy SAE 6 x Face Seal. (eliminates coupler use on both the ange cylinder hoses and P.A. Block )**

**Note: Only use couplers (22443 and 22444) on units installed on E-Z Mount Classic or E-Z Mount Custom Plow Systems where only the plow is removed from the vehicle.**

#### Passenger Side NPT Hose with SAE Adapter



#### Passenger Side SAE Hose



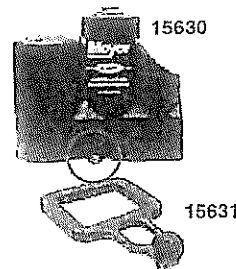
#### Driver Side NPT Hose with SAE Adapter



#### Driver Side SAE Hose



Drill .66" diameter hole 9-7/16" from rear bolt on existing Lift Arm for EZ Mount Classic and Custom mountings only. (See S.B. 208)



Meyer Products LLC reserves the right, under its continuing product improvement program, to change construction or design details, specifications and prices without notice or without incurring any obligations.





# Service Bulletin

SB 219 R - December 2006 1 of 1

18513 Euclid Avenue

Cleveland, Ohio 44112-1084

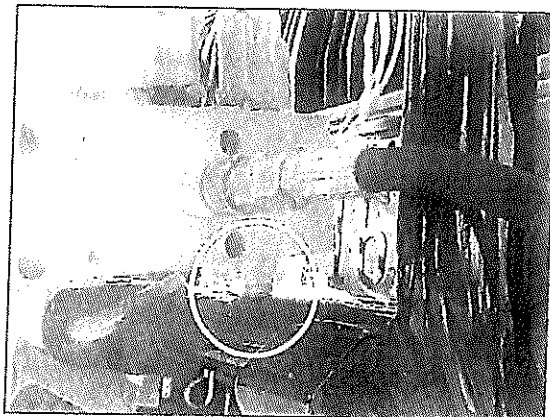
[www.meyerproducts.com](http://www.meyerproducts.com)

Phone: 216-486-1313 Fax: 216-486-9776

E-mail [warranty@meyerproducts.com](mailto:warranty@meyerproducts.com)

## SUBJECT: 11275 and 11545 Classic Lift Frames

Meyer has discovered that during a regularly scheduled quality control audit a potential interference issue between the Lift Frame cross tube and the Cross-Over nut located at the bottom of the power angling block used on the E-58H hydraulic unit.

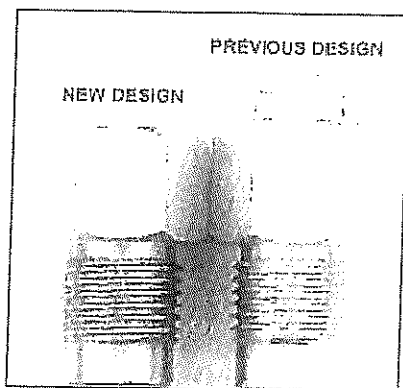


Please check for interference when using a E-58H hydraulic unit during assembly and prior to the delivery of the snow plow to the customer.

In cooperation with our supplier, Meyer Products has redesigned the Cross-Over Relief Assembly 15974. The new design provides greater clearance at the cross tube when installing the E-58H on the EZ Classic Lift Frame. Cross-Over Relief operation has not been altered due to the redesign.

All Meyer parts inventory will be updated to the new Relief Valve. Distributor inventory will not be affected.

If interference is present, please contact our Customer Service Department and place a parts order for the redesigned Crossover relief 15974.



**15974  
CROSS-OVER RELEIF**

Meyer Products LLC assumes no responsibility for installations not made according to these instructions.

|           |                 |               |                 |               |
|-----------|-----------------|---------------|-----------------|---------------|
| Route To: |                 |               |                 |               |
| Initial   | President/Owner | Sales Manager | Service Manager | Parts Manager |
|           |                 |               |                 |               |





# Service Bulletin

SB 208 - September 2005 1 of 1

18513 Euclid Avenue Cleveland, Ohio 44112-1084 216-486-1313 Fax 216-486-9775 [www.meyerproducts.com](http://www.meyerproducts.com) E-mail [info@meyerproducts.com](mailto:info@meyerproducts.com)

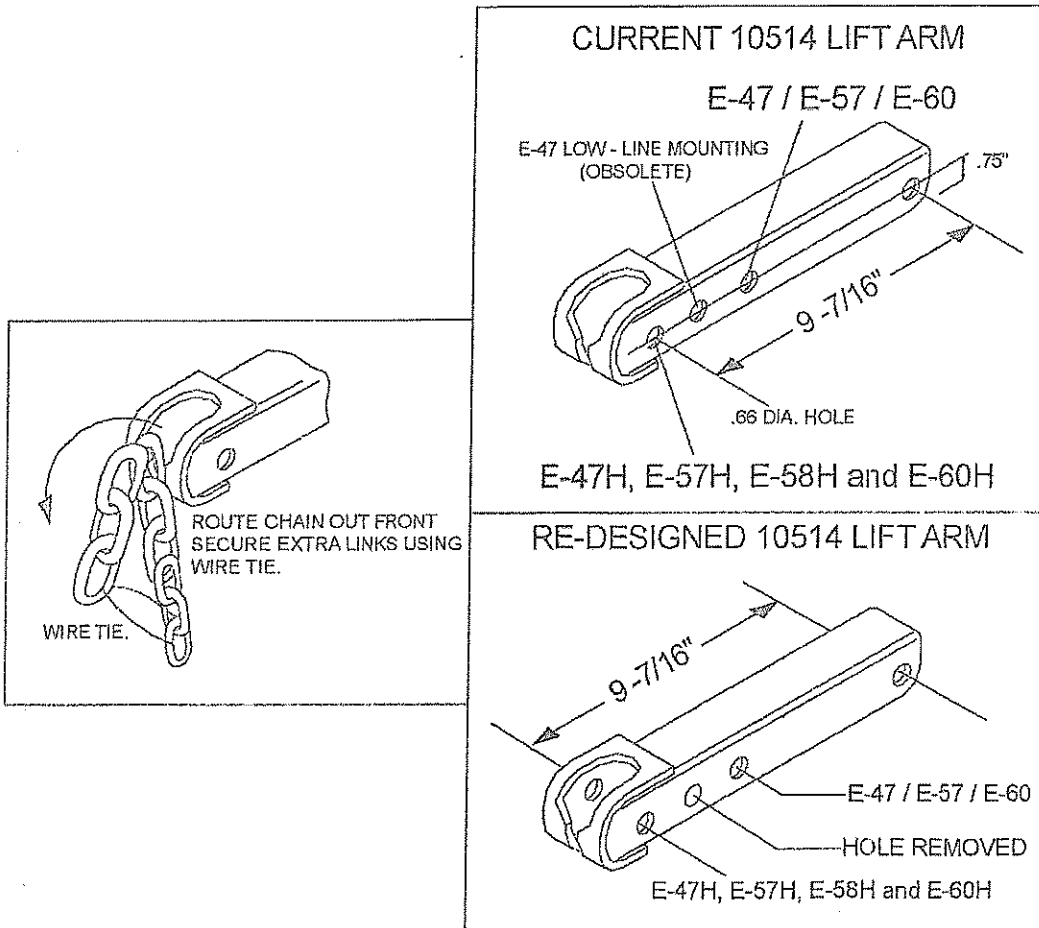
## SUBJECT: 10514 LIFT ARM

In our continued efforts to improve distributor profit margins and reduce inventory through consolidation of part numbers and improved product quality, we have made a change to our 10514 Lift Arm used on all of our EZ Custom, EZ Mount Classic Systems.

As a result, this product enhancement will standardize our Lift arm allowing all Electro-Lift® hydraulic units whether 6" or 8" stroke units to be used on all of our EZ Mount Custom, EZ Mount Classic Systems. This will be a running change and will NOT obsolete any inventory at the factory or in the field.

The change is already in place at the factory. Updated 10514 Lift Arm will be seen in cartons packed after September 26, 2005.

To modify an existing 10514 Lift Arm to be used on a EZ Mount Custom or EZ Mount Classic to accept an "H" (8" stroke) hydraulic unit another hole must be drilled in the end of the lift arm. Per illustration



We are very pleased to announce this change and will continue to look for ways to reduce costs while improving product quality for our distributors in the future!

|         |                 |               |                 |               |
|---------|-----------------|---------------|-----------------|---------------|
|         | Route To:       |               |                 |               |
|         | President/Owner | Sales Manager | Service Manager | Parts Manager |
| Initial |                 |               |                 |               |